

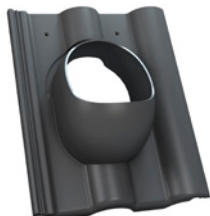
# DACHÓWKI PRZEJŚCIOWE

WYKAZ TYPÓW DACHÓWEK PRZEJŚCIOWYCH DO DACHÓWEK  
BETONOWYCH I CERAMICZNYCH.



**P1801**

EURONIT / profil S



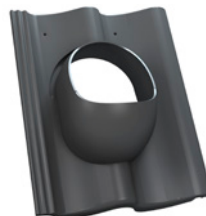
**P1802**

EURONIT / extra



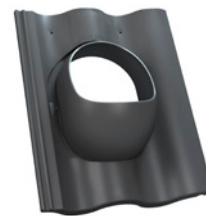
**P1803**

BRAAS / bałtycka S  
IBF / podwójna S  
NELSKAMP / esówka S  
PRODACH / podwójna  
esówka



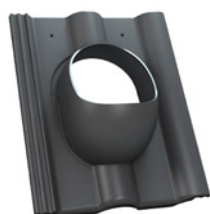
**P1803/150**

BRAAS / bałtycka S  
IBF / podwójna S  
NELSKAMP / esówka S  
PRODACH / podwójna  
esówka



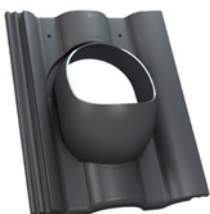
**P1804**

BRAAS / cełtycka  
NELSKAMP / sigma



**P1805**

BRAAS / romańska  
PRODACH / podwójna  
rzymska  
BENDERS / mecklenburger



**P1806**

BRAAS / grecka



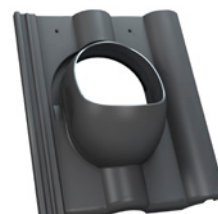
**P1807**

BRAAS / tegalit protegon



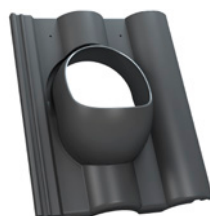
**P1808**

BENDERS / podwójna S



**P1809**

NELSKAMP / finkenberger  
IBF / podwójna rzymska



**P1810**

NELSKAMP / do krycia  
koronowego



**P1811**

BRAAS / turmalin



**P1812**

RÖBEN / monza plus



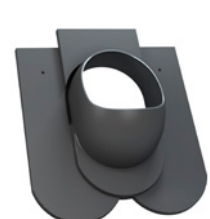
**P1813**

KORAMIC /  
renesansowa L15



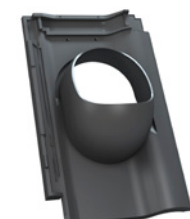
**P1814**

KARPIÓWKA / łuska



**P1815**

KARPIÓWKA / koronka



**P1816**

RÖBEN/ piemont



**P1818**

TONDACH / holenderka 11



**P1820**

KORAMIC / alegra 9



**P1821**

BRAAS / rubin 13V